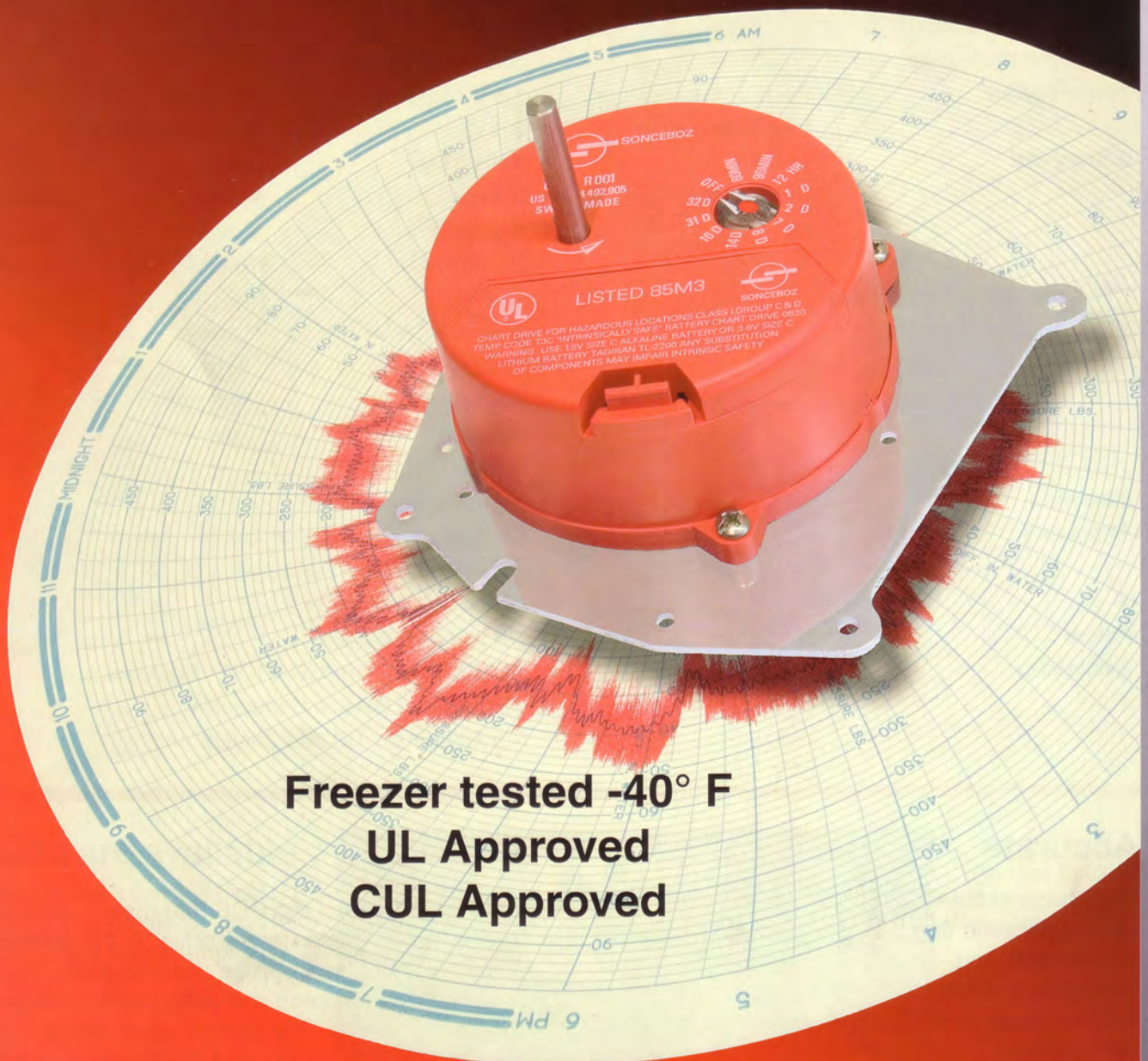


SONCEBOZ

The driving force

820 Battery Chart Drive



Freezer tested -40° F
UL Approved
CUL Approved

**The Premium Battery Chart Drive covered by SONCEBOZ
2-year warranty**

820 – advantages

Rotation speeds	Test: 60MIN 96 MIN
	Standard: 12HR 1D 2D 7D 8D 14D 16 D 31D 32D
Accuracy	Quartz controlled
ON OFF	On selector
Function indicator	Pulsating LED indicates functioning
Rotation	Standard: counter clockwise Clockwise (please specify)
Shaft	Standard: ¼" diameter Threaded Foxboro No axial output shaft side play No angular backlash
Torque	25 IN OZ at all speeds
Operating temperature range	-40° F to 160° F
Corrosion protection	Sealed with gaskets
Power supply	Regular Temperature 1.5 V Alkaline «C» Size Battery Low Temperature 3.6 V Lithium «C» Size Battery
Battery life	SPEED AMB. TEMP. 32° F -5° F
	60 minutes 2 weeks 1 week 1 week
	24 hours 6 months 4 months 3 months
	7 - 32 days 24 months 16 months 12 months
Chart recorder compatibility	NuFlo Bristol American Meter Rockwell Partlow Foxboro Honeywell Reynolds Mercury Taylor Palmer
Mounting	No additional standoffs required
Approvals	UL Listed: class 1 groups C & D CUL Listed: class 1 groups C & D Intrinsically safe chart drive
Patent	US patent 4.492.905
Availability	SONCEBOZ CORPORATION - Plainview, NY Distributors / Service Companies Throughout the US and Canada

Accurate

The timing of the CDS 820 is based on the inherent precision of the **quartz movement concept**. Engineered and manufactured by SONCEBOZ. Scrupulous attention to detail resulted in a unit with **no axial output shaft side play or angular backlash**. Thus greatly ensuring an exact pen stroke documentation.

Reliable

The high quality of the CDS 820 makes it the most trouble free of any available chart drive. **A 1.5 alkaline or a 3.6 lithium «C» battery** can be used to power the chart drive. Lithium batteries keep the units working for along time at low temperatures. The battery compartment is separated from the drive mechanism. A sturdy housing made of durable material and sealed by an acid resistant O-ring provides a hermetic enclosure. The CDS 820 is **freezer tested to temperature of -40 °F**.

The Universal Mounting Plate design allows the 820 to be installed in all major brands of recorders.

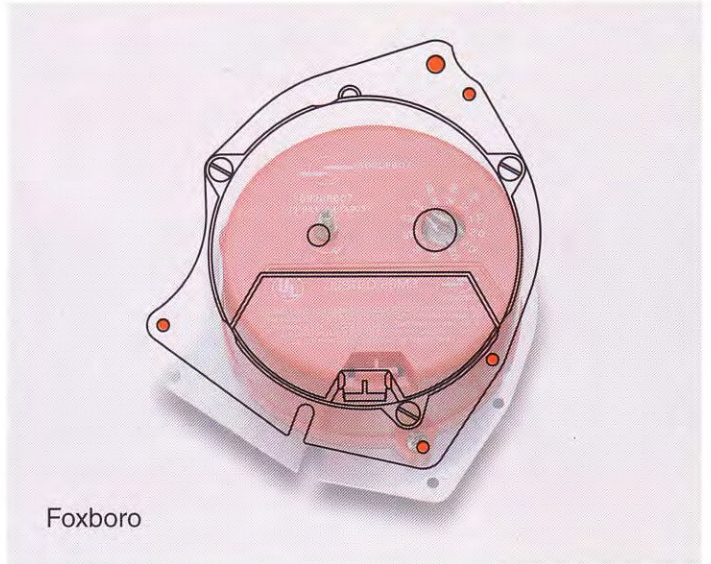
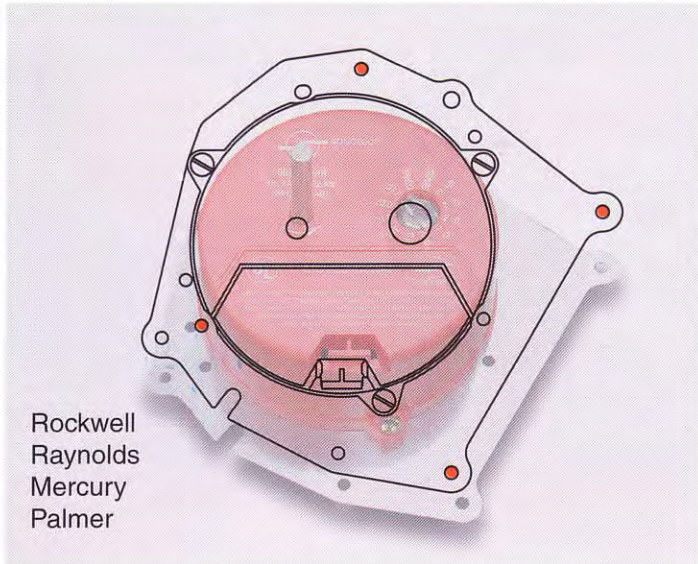
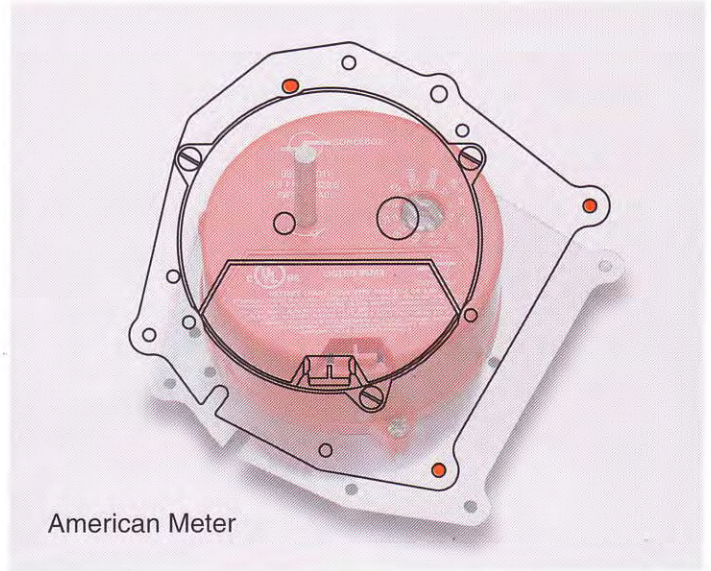
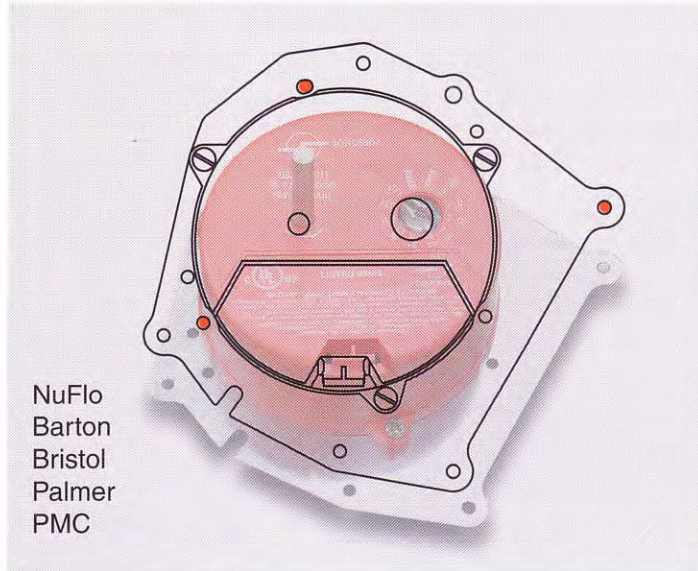
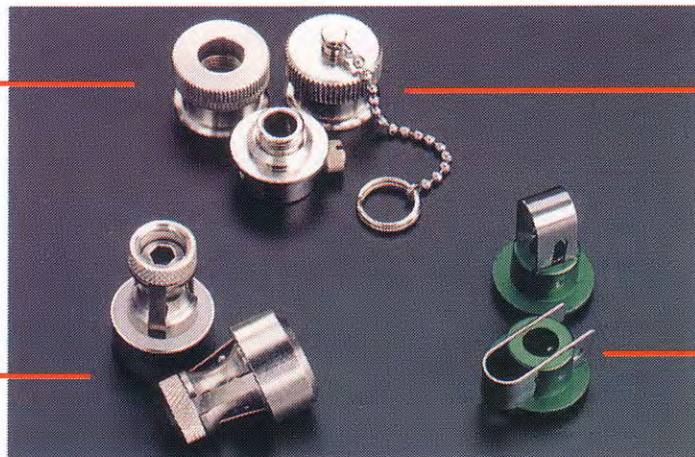


Chart hubs are available

«Contact face» clamps without twisting or distorting chart paper. 4 starter thread results in fast tight clamping.

Part No. G 004
FOXBORO
Push-Pull



Part No. G 224
Part No. G 70
Part No. G 198

Part No. G 190

Versatile

The CDS 820 incorporates **11 switch selectable speeds** which make it usable for different applications. The **universal mounting plate** makes the CDS 820 fit in all major brands of recorders. No additional standoffs are needed. Retrofit/conversion can be performed easily in a shop or in the field. A 1/4" diameter output shaft with flat and the threaded Foxboro shaft are available from stock. **Other shafts are available** upon request.

Convenient

The field technicians requested the important new features of the CDS 820. A rugged rotating speed selector for **11 speeds**. Fast **test speeds**, 60 min. and 96 min. revolution. All documentation speeds to as slow as 32 days/revolution. An «**off**» position saves battery life. A pulsating red status light indicates that the unit is working. Hence a time saver, eliminating double checking of chart movement. This is particularly valuable in applications requiring slow rotational speeds. A **body pilot** is locating the CDS 820 on the mounting plate. Removing 3 screws permits exchange of chart drive. **No recalibration** is necessary.

Frequently used Part No's

Part No.	Output Shaft	Mounting	Approvals
820R001	1/4" Dia. CCW	Universal	UL
820R005	1/4" Dia. CW	Universal	UL
820R006	1/4" Dia. CCW	Pear Shaped	UL
820R007	Threaded CCW	Foxboro	UL
820R011	1/4" Dia. CCW	Universal	CUL



Special Feature Battery Chart Drive

Part No.	Output Shaft
820R018	1/4" Dia. CCW incl. 96 day speed for survey Recordings
820R025	1/4" Dia. CCW High torque 72 in/oz
820R029	1/4" Dia. CCW Faster speeds: 30 min. 1HR 2HR 4HR 6HR 8HR 12HR 1D 2D 3D 4D 7D

For precision, quality and reliability choose
SONCEBOZ PRODUCTS

USA

SONCEBOZ CORPORATION
210 Newtown Road



**Peterson
Instruments**

www.petersoninst.com
Calgary Order Desk: 1-800-667-7993

#123, 5655 10th Street N.E., Calgary, Alberta T2E 8W7
Bus: (403) 291-9169 • Fax: (403) 291-0960

Switzerland

SONCEBOZ SA

CH-2605 Sonceboz
Tél: +41 32 488 11 11
Fax: +41 32 488 11 00
E-Mail: info@sonceboz.com
Internet: www.sonceboz.com



SONCEBOZ

The driving force

Right to change reserved - 02.2006