

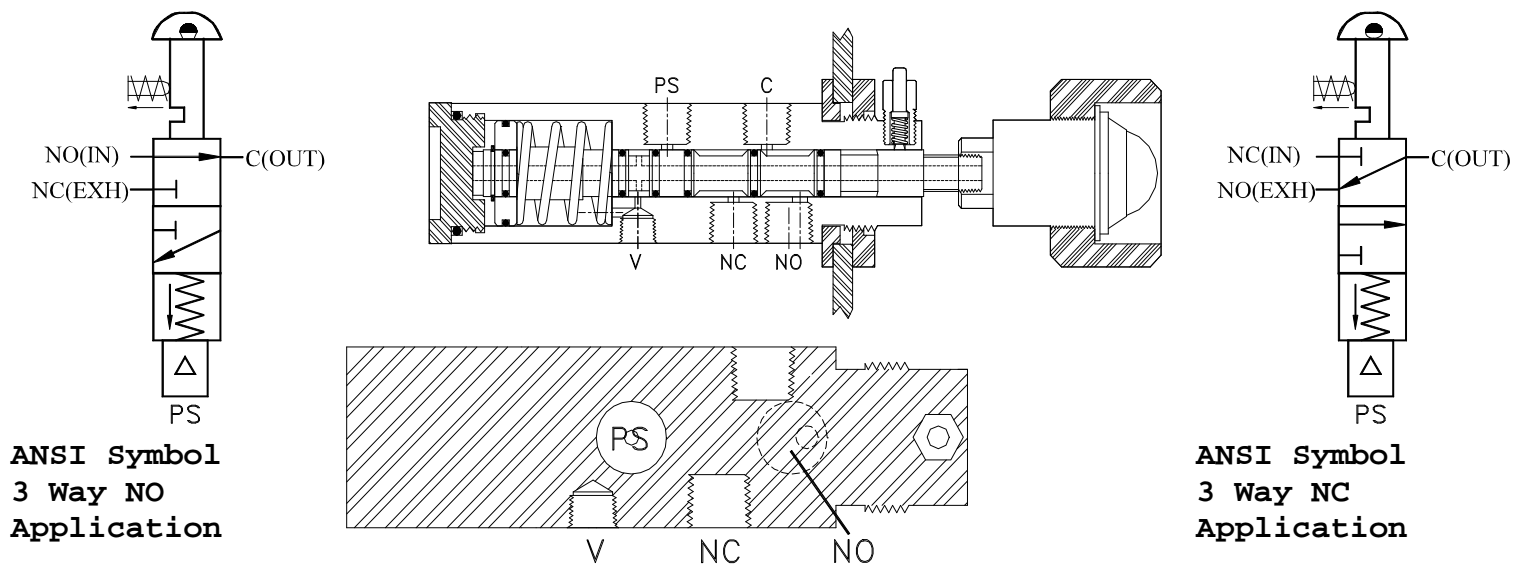
MANUAL RESET RELAY - HLR 8920-7

Pull-To-Reset Model

Designed for control circuits that require a three way "Block & Bleed" flow control valve. The HLR 8920-7 is a two position, three way **Universal Ported**, spring return, manual reset flow control assembly that is pilot supply pressure operated. It has a large Red/Green Rotowink Indicator and Latch Pin assembly.

Special Features: The Latch Pin assembly allows for instrument pressure transfer (By-Pass) without applied Pilot Supply pressure. It will automatically release upon application of Pilot Supply pressure. The HLR 8920-7 will provide years of excellent control function. Its exhaust function control port is also threaded to properly dispense the exhausting pneumatic (gas) media to a disposal header. The relay has a Red/Green Rotowink Indicator to display the on/off application of Pilot Supply pressure.

Reason To Use: The HLR 8920-7 has Universal ports, therefore it can be used for both **Normally Closed** or **Normally Open** (three way "Block & Bleed control circuit applications. Its large spring insures positive, retracted movement of the Stem upon loss of Pilot Supply pressure. Our unique "screw-off" type Retainer provides easy access to internal components for replacement of the valve's seals.



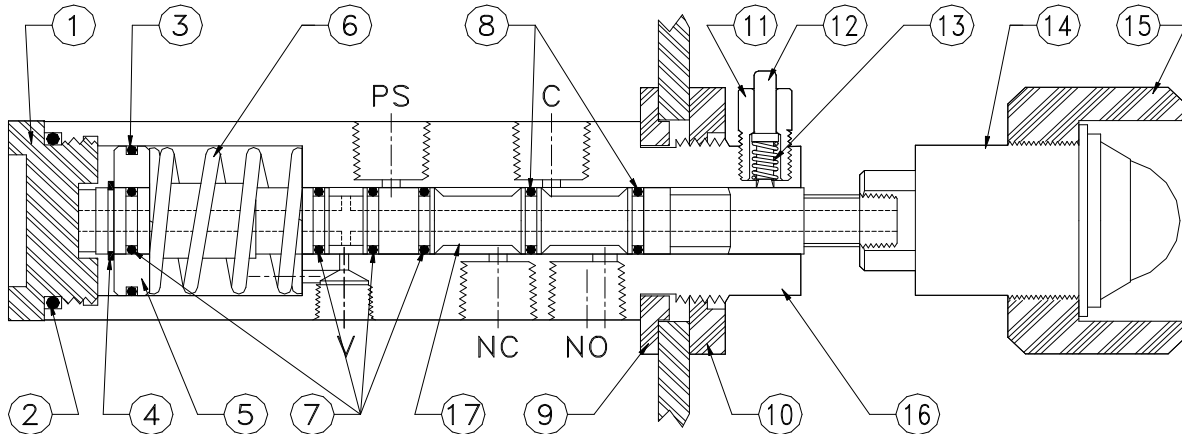
BODY ORIENTATION - TOP VIEW

Characteristics

1. Dimensions : 1.500" Dia. X 8.0" L.
2. Working Pressure: 30 PSI Min - 125 PSI Max (Pilot Supply)
Up to 200 PSI Max. (Control Ports)
3. Connections: 1/4"-18 N.P.T. (Control Ports)
1/8"-27 N.P.T. (Exh. Vent)
4. Material: 316 Stainless Steel
5. Weight: 2.5 Lbs. (1.13 Kg.)
6. Panel Hole Cutout: 1.500" Dia. (38.1 MM)
7. Seals: Viton

MANUAL RESET RELAY - HLR 8920-7

The HLR 8920-7 is a two position, three way Universally ported, pilot supply pressureoperated, spring return, panel mounted, flow control valve. A Latch Pin assembly and a Red/Green Rotowink Indicator are standard components. The Relay can be employed in either a three way **Normally Closed** or **Normally Open** control application.



BILL OF MATERIAL

ITEM	PART NAME	PART NUMBER	MATERIAL
1.	Retainer	7817M89	316SS
2.	O-Ring	AS-121V75	Viton
3.	O-Ring	AS-022V75	Viton
4.	Retainer Ring	.500 ERR	302SS
5.	Piston	7813	316SS
6.	Spring	1.095X1.25X62	302SS
7.	O-Ring (4)	AS-012V75	Viton
8.	O-Ring (2)	AS-012V95	Viton
9.	Panel Jam	7818A	Delrin
10.	Nut	7816TX	316SS
11.	Cap	7814A	316SS
12.	Pin	7815B	316SS
13.	Spring	.210X.375X22	302SS
14.	Indicator	5VS-412SS	Delrin & 316SS
15.	Indicator Guard	7819	Delrin
16.	Body	2-74	316SS
17.	Stem	8922	316SS

FEATURES

1. Dimensions: 1.500" Dia. X 8" L.
2. Working Pressure:
Pilot Supply - 30 Psi Min, 125 PSI Max.
Relayed Supply - 200 PSI Max.
3. Connections: 1/4" - 18 NPT.
4. Weight: 2.5 lbs.

OPERATION NOTES

1. To operate with a Pilot Supply pull Indicator outward.
2. To operate without Pilot Supply (to By-Pass), Pull Indicator Outward, depress Pin (item #12). Pin will automatically release when Pilot Supply is applied.